

INDUSTRIAL SPACE FOR SUBLEASE

3045 Chastain Meadows Parkway, Marietta, Georgia

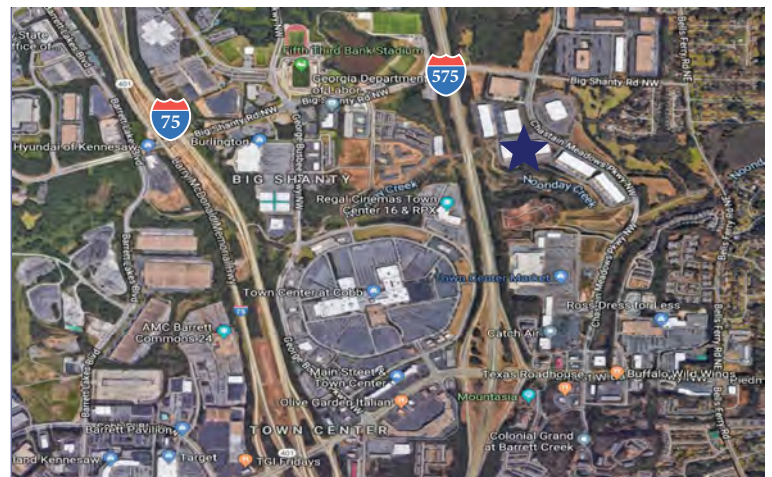


- 58,140 SF Available
- 6,400 SF Office
- Sublease through 2/28/2021
- End cap space
- 13 dock doors
- 1 drive-in ramp
- 24' clear height
- ESRF



Bill Doran
bdoran@dorancre.com
404.218.2775

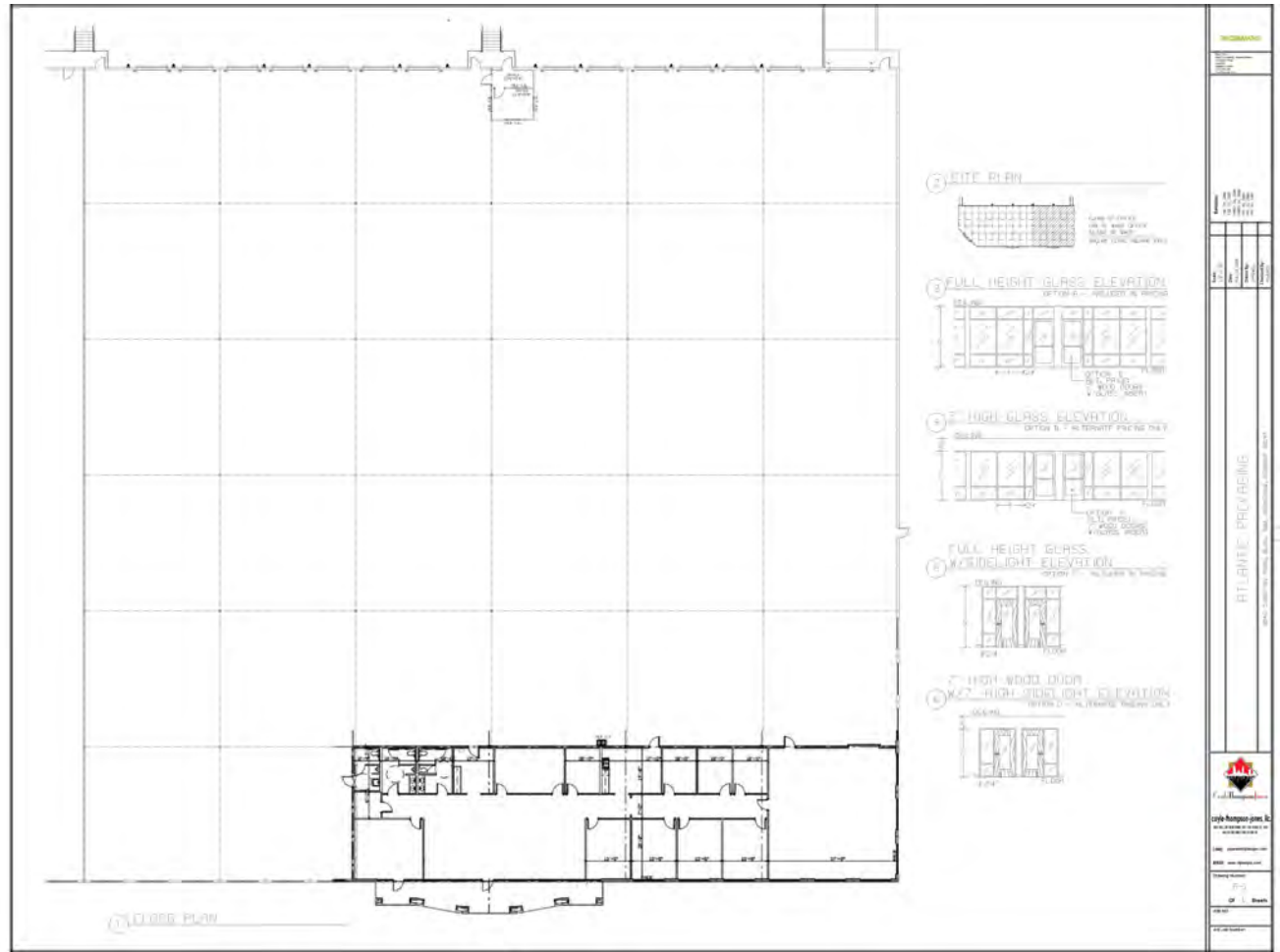
Doran Commercial Real Estate, LLC
2295 Towne Lake Pkwy, Suite 116-162, Woodstock, GA 30189



INDUSTRIAL SPACE FOR SUBLEASE

3045 Chastain Meadows Parkway, Marietta, Georgia

BUILDING LAYOUT



OFFICE LAYOUT

